



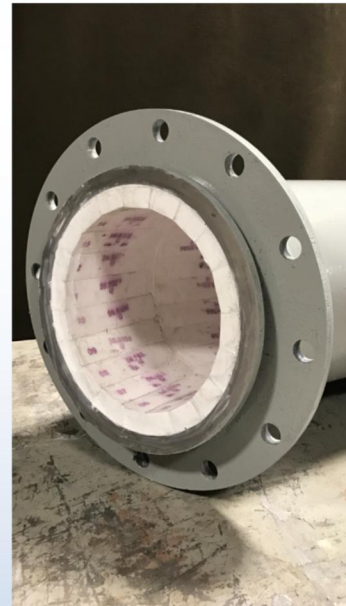
CERAMIC BOTTOM ASH PIPE

No rotation is ever needed

35 year history of in service pipe in the coal fire power industry

Features and Benefits

- High-density, fine grained 90% alumina tiles
- 1/2" pipe brick in straight sections
- 1" engineered brick in the fittings
- Original I.D. of pipe is maintained using custom spiral weld pipe for direct replacement
- Available in all sizes, lengths and bend radii
- All varieties of end connections offered



Optimize Your Maintenance Budget



THERMO VAC
201 Oakwood Rd
Oxford, MI. 48371

www.thermovac.com